

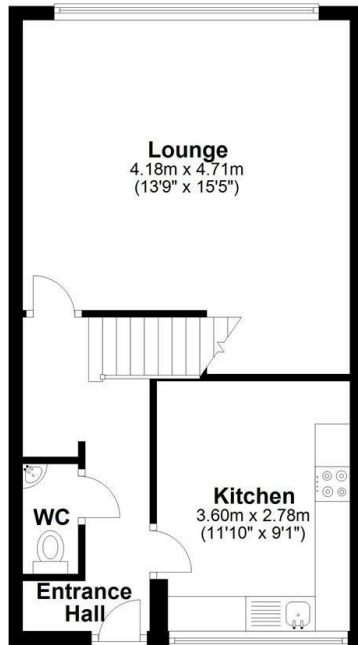


Flat 14, Landrake Plender Street, London, NW1 0DA

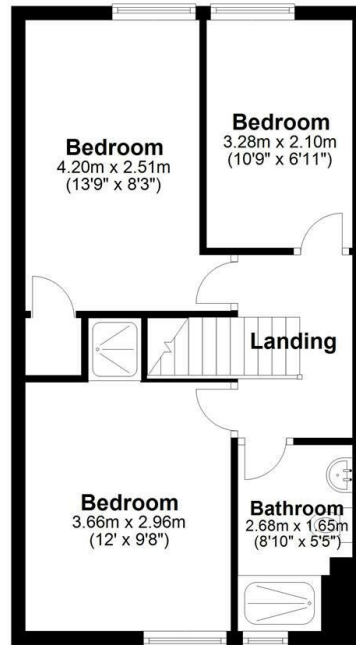
Asking Price £595,950

- Three bedroom split level maisonette
- Tiled bathroom suite
- Approx. 5 minute walk to Mornington Crescent Underground Station (Northern line)
- Set on the top two floors of this purpose built block
- Built in storage
- Separate kitchen
- A short walk away from Kings Cross & Euston

Ground Floor

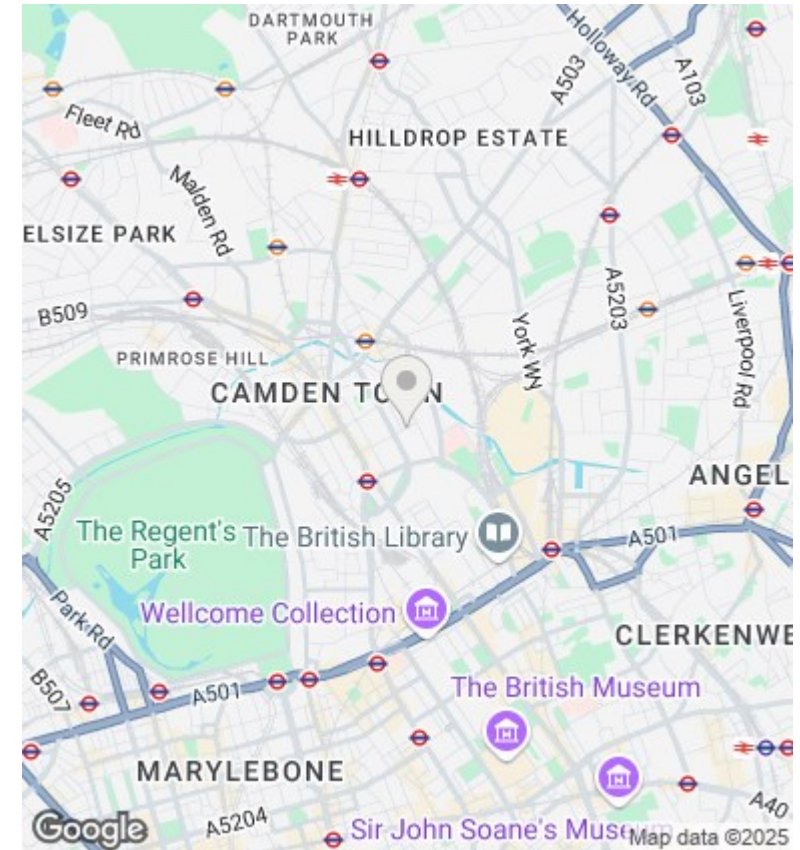


First Floor



Total area: approx. 82.9 sq. metres (891.9 sq. feet)

Floorplans are provided for guidance only. They are not to scale & must not form any part of a legal contract or be reproduced
Plan produced using PlanUp.



Viewings

Viewings by arrangement only. Call 020 7485 0112 to make an appointment.

Council Tax Band

C

EPC Rating:

C

Energy Efficiency Rating		
	Current	Potential
<i>Very energy efficient - lower running costs</i>		
(92 plus) A		
(81-91) B		
(69-80) C	69	72
(55-68) D		
(39-54) E		
(21-38) F		
(1-20) G		
<i>Not energy efficient - higher running costs</i>		
England & Wales	EU Directive 2002/91/EC	